

Legend:

- Norfolk Boreas onshore red line boundary
- Traffic and transport study area
- Location of minor highway links - see figure 24.11a

Link Category

- Category 1 links: Kings Lynn Port: 70% HGV flows
- Category 1 links: Great Yarmouth Port: 70% HGV flows
- Category 1 links: Lowestoft Port: 70% HGV flows
- Category 1 links: Lowestoft/Great Yarmouth Port: 70% HGV flows
- Category 2 links: 100% HGV flows
- Links without HGV flows

Project:	Report:
Norfolk Boreas	Environmental Statement

Title:

Scenario 1 - HGV Construction Traffic Flows:
Core Highway Links Access Strategy

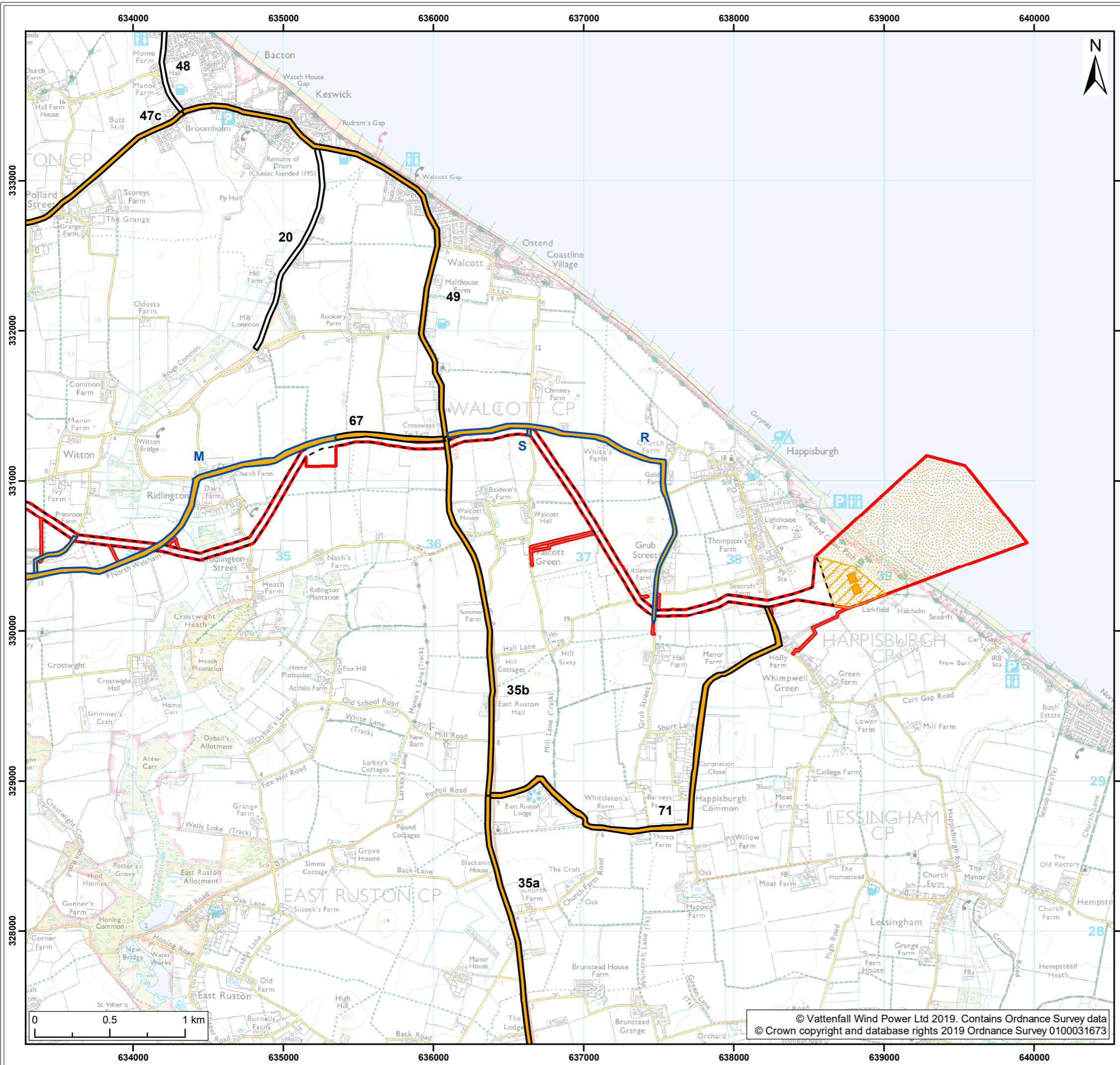
Figure: 24.11	Drawing No: PB5640-006-024-011				
Revision:	Date:	Drawn:	Checked:	Size:	Scale:
03	01/04/2019	JT	CD	A3	1:300,000
02	28/03/2019	JT	CD	A3	1:300,000

Co-ordinate system: British National Grid EPSG: 27700

VATTENFALL

Royal HaskoningDHV
Enhancing Society Together

© Vattenfall Wind Power Ltd 2019. Contains Ordnance Survey data
© Crown copyright and database rights 2019 Ordnance Survey 0100031673



- Legend:
- Norfolk Boreas red line boundary
 - Norfolk Boreas Onshore Project Infrastructure (Scenario 1)**
 - Landfall zone
 - Landfall compound zone
 - Indicative landfall compound
 - Onshore cable route
 - Construction access
 - Operational access
 - Highway links**
 - Core highway links
 - Minor highway links
 - Link Category**
 - Category 2 links: 100% HGV flows
 - Links without HGV flows

Project: Norfolk Boreas	Report: Environmental Statement
----------------------------	------------------------------------

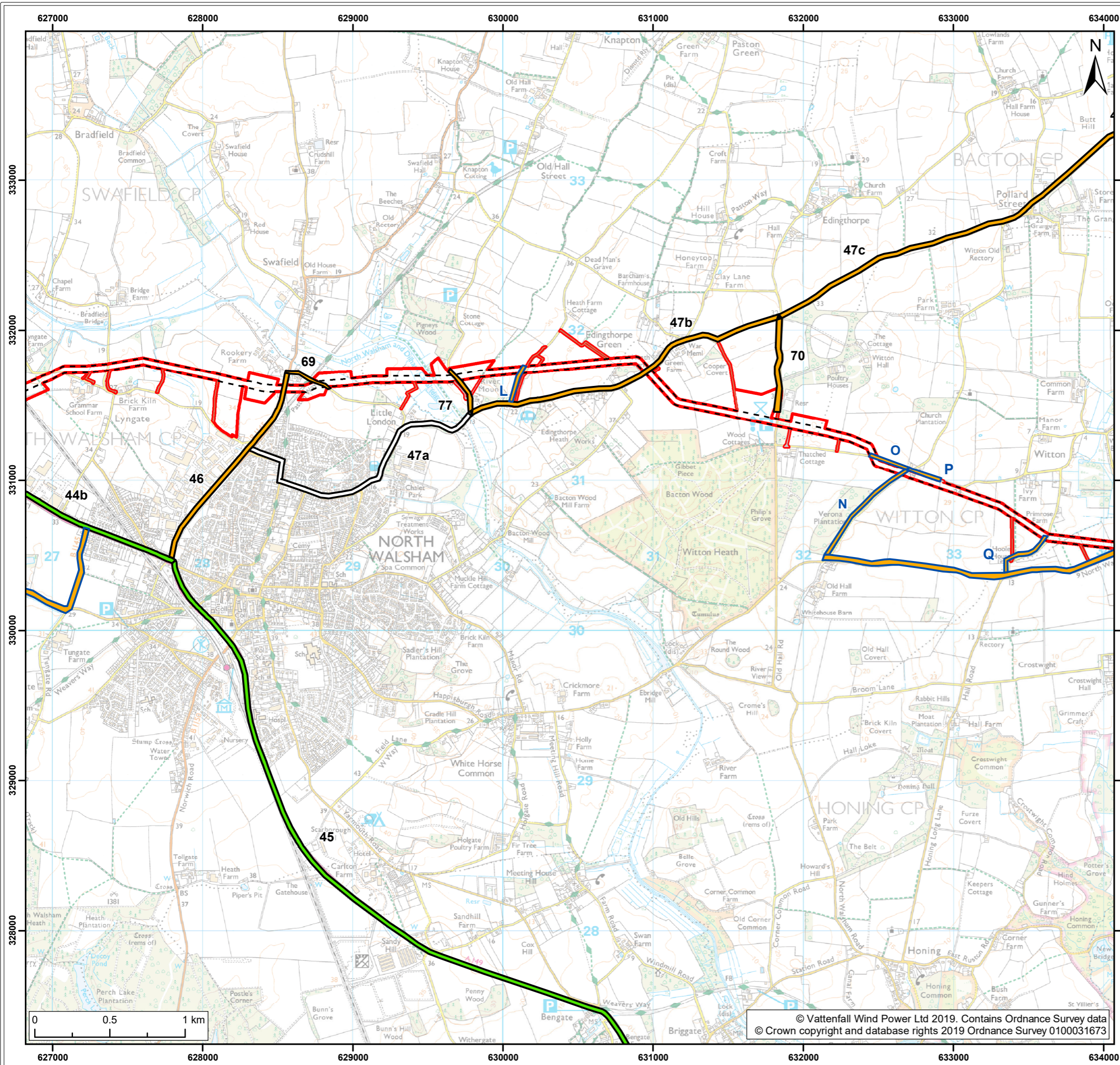
Title:
Scenario 1 - HGV Construction Traffic Flows:
Minor Highway Links Access Strategy (1:25,000)
(Map 1 of 9)

Figure: 24.11a		Drawing No: PB5640-006-024-011a			
Revision:	Date:	Drawn:	Checked:	Size:	Scale:
01	18/02/2019	JT	CD	A3	1:25,000

Co-ordinate system: British National Grid EPSG: 27700



© Vattenfall Wind Power Ltd 2019. Contains Ordnance Survey data
© Crown copyright and database rights 2019 Ordnance Survey 0100031673



Legend:

- Norfolk Boreas red line boundary
- Norfolk Boreas Onshore Project Infrastructure (Scenario 1)**
- Onshore cable route
- Construction access
- Operational access
- Highway links**
- Core highway links
- Minor highway links
- Link Category**
- Category 1 links: Kings Lynn Port: 70% HGV flows
- Category 2 links: 100% HGV flows
- Links without HGV flows

Project: Norfolk Boreas	Report: Environmental Statement
-----------------------------------	---

Title:
Scenario 1 - HGV Construction Traffic Flows:
Minor Highway Links Access Strategy (1:25,000)
(Map 2 of 9)

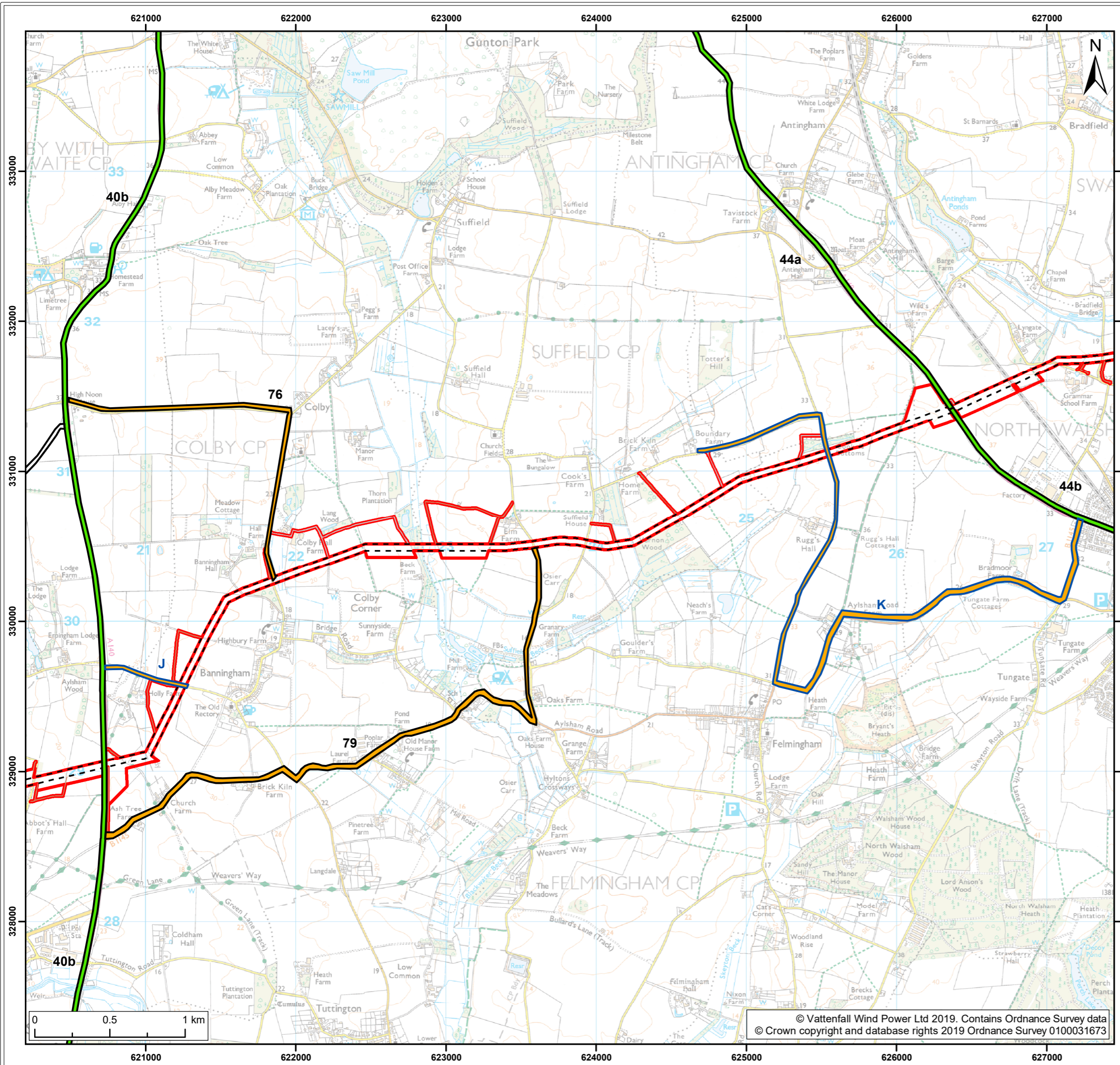
Figure: 24.11a		Drawing No: PB5640-006-024-011a			
Revision:	Date:	Drawn:	Checked:	Size:	Scale:
01	18/02/2019	JT	CD	A3	1:25,000

Co-ordinate system: British National Grid **EPSG: 27700**

VATTENFALL

Royal HaskoningDHV
Enhancing Society Together

© Vattenfall Wind Power Ltd 2019. Contains Ordnance Survey data
© Crown copyright and database rights 2019 Ordnance Survey 0100031673



Legend:

- Norfolk Boreas red line boundary
- Norfolk Boreas Onshore Project Infrastructure (Scenario 1)**
- Onshore cable route
- Construction access
- Operational access
- Highway links**
- Core highway links
- Minor highway links
- Link Category**
- Category 1 links: Kings Lynn Port: 70% HGV flows
- Category 2 links: 100% HGV flows
- Links without HGV flows

Project: Norfolk Boreas	Report: Environmental Statement
-----------------------------------	---

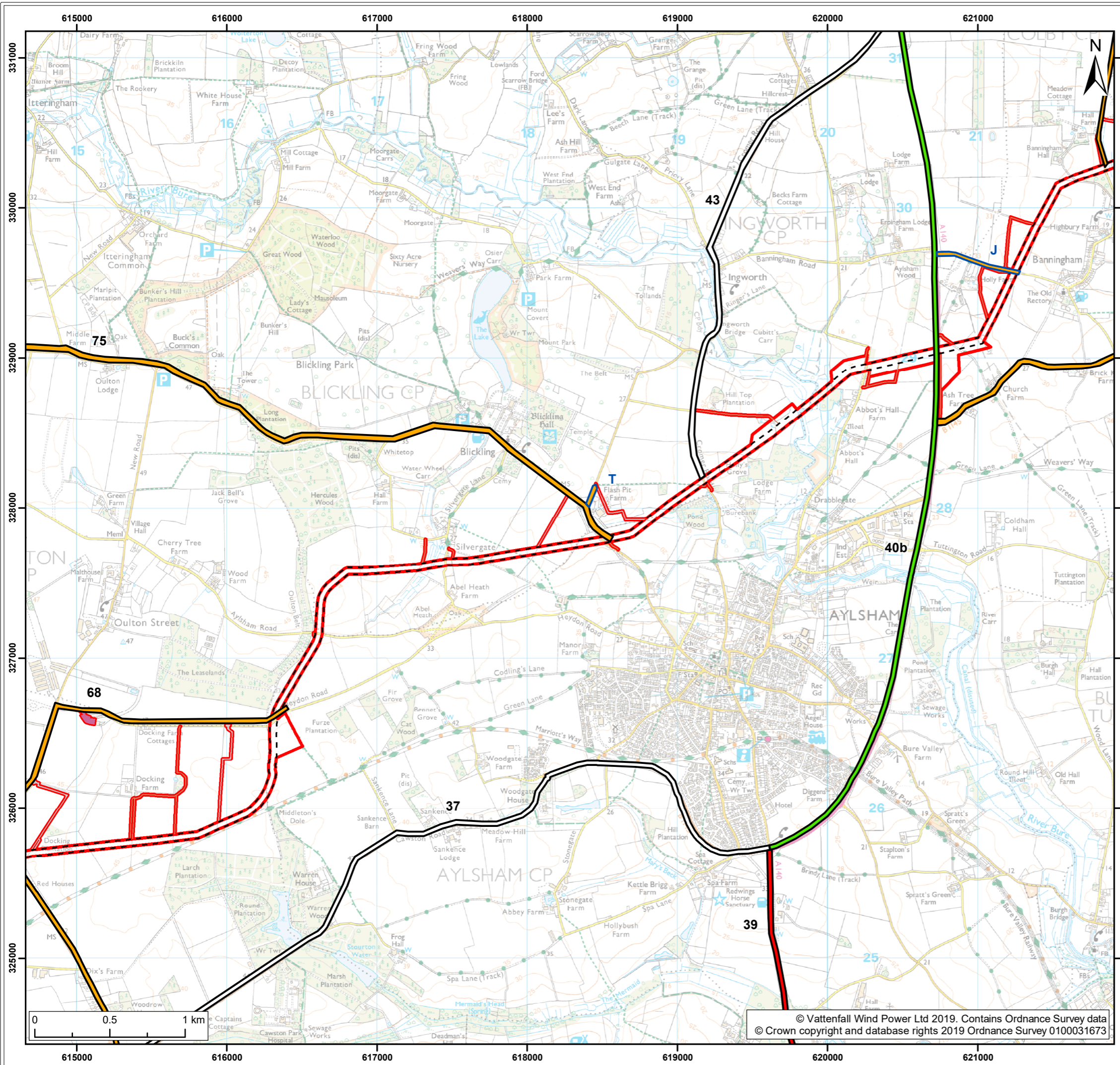
Title:
Scenario 1 - HGV Construction Traffic Flows:
Minor Highway Links Access Strategy (1:25,000)
(Map 3 of 9)

Figure: 24.11a		Drawing No: PB5640-006-024-011a			
Revision:	Date:	Drawn:	Checked:	Size:	Scale:
01	18/02/2019	JT	CD	A3	1:25,000

Co-ordinate system: British National Grid **EPSG:** 27700

VATTENFALL

Royal HaskoningDHV
Enhancing Society Together



Legend:

- Norfolk Boreas red line boundary

Norfolk Boreas Onshore Project Infrastructure (Scenario 1)

- Onshore cable route
- Cable logistics area
- Construction access
- Operational access

Highway links

- Core highway links
- Minor highway links

Link Category

- Category 1 links: Kings Lynn Port: 70% HGV flows
- Category 1 links: Lowestoft/Great Yarmouth Port: 70% HGV flows
- Category 2 links: 100% HGV flows
- Links without HGV flows

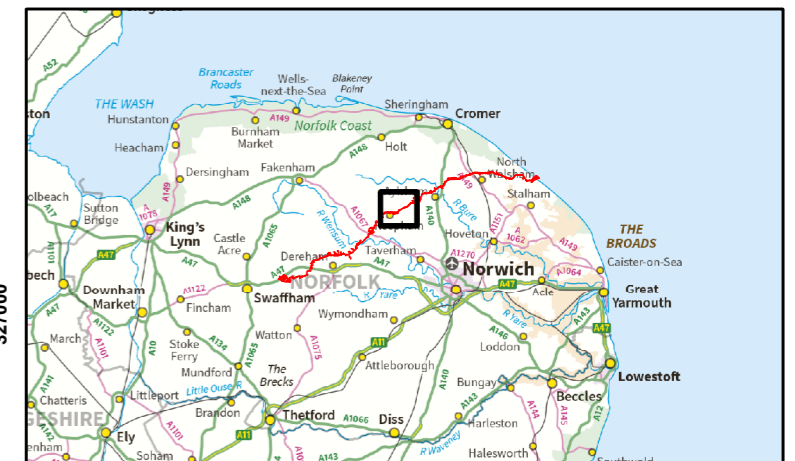
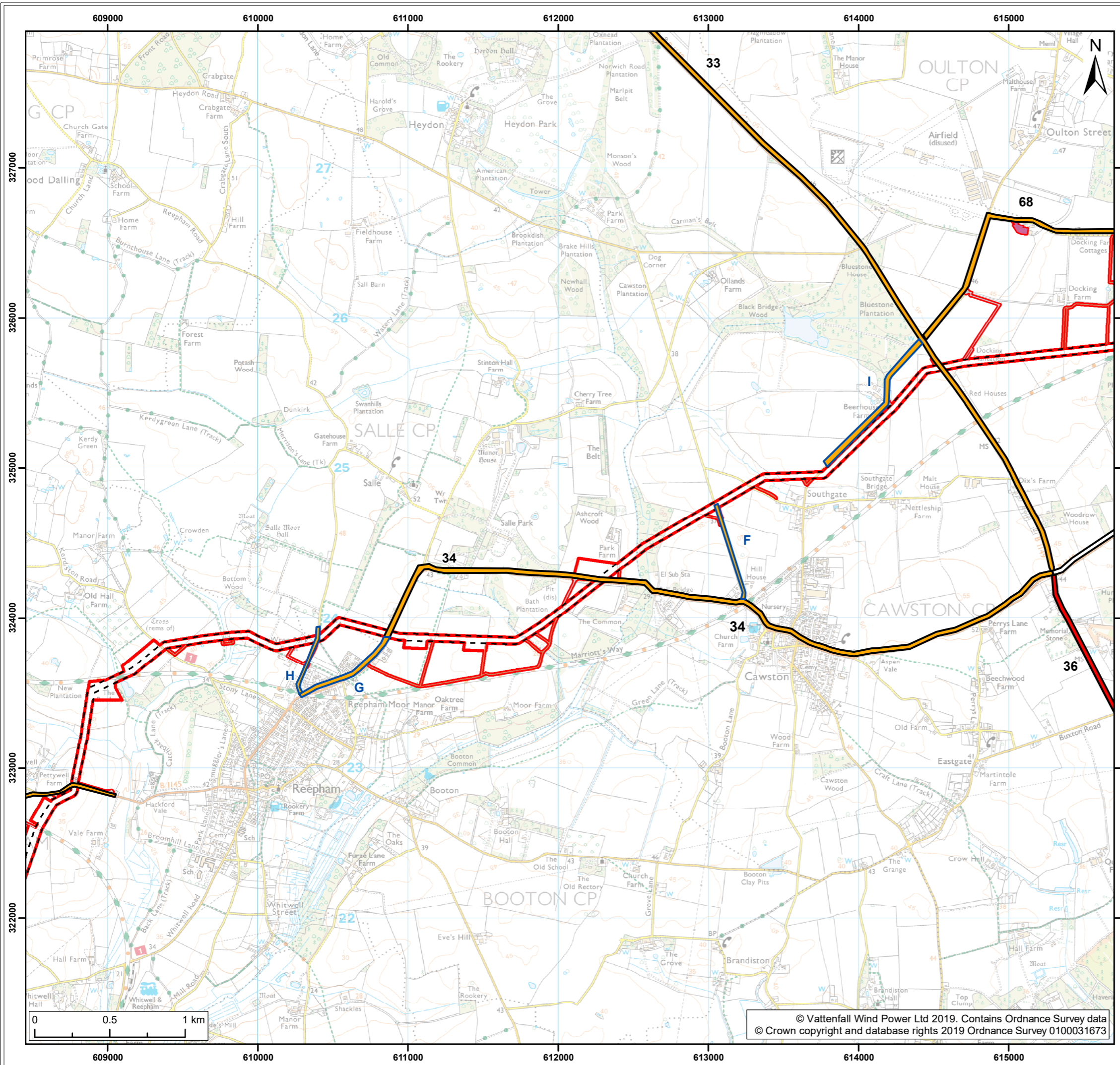
Project:	Report:
Norfolk Boreas	Environmental Statement

Title:
 Scenario 1 - HGV Construction Traffic Flows:
 Minor Highway Links Access Strategy (1:25,000)
 (Map 4 of 9)

Figure: 24.11a	Drawing No: PB5640-006-024-011a				
Revision:	Date:	Drawn:	Checked:	Size:	Scale:
01	18/02/2019	JT	CD	A3	1:25,000

Co-ordinate system: British National Grid EPSG: 27700





Legend:

- Norfolk Boreas red line boundary

Norfolk Boreas Onshore Project Infrastructure (Scenario 1)

- Onshore cable route
- Cable logistics area
- Construction access
- Operational access

Highway links

- Core highway links
- Minor highway links

Link Category

- Category 1 links: Lowestoft/Great Yarmouth Port: 70% HGV flows
- Category 2 links: 100% HGV flows
- Links without HGV flows

Project:	Report:
Norfolk Boreas	Environmental Statement

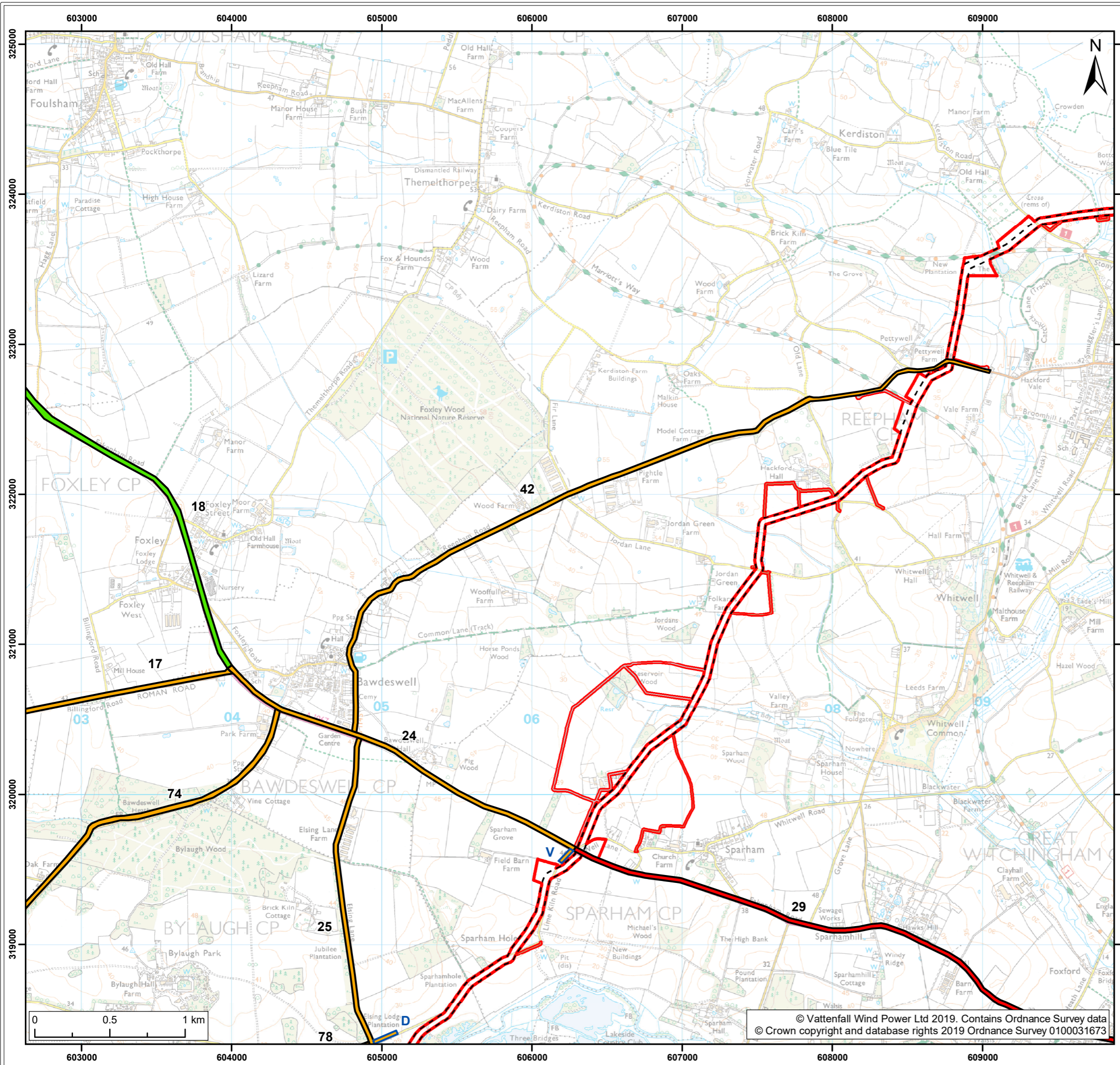
Title: Scenario 1 - HGV Construction Traffic Flows: Minor Highway Links Access Strategy (1:25,000) (Map 5 of 9)

Figure: 24.11a	Drawing No: PB5640-006-024-011a				
Revision:	Date:	Drawn:	Checked:	Size:	Scale:
01	18/02/2019	JT	CD	A3	1:25,000

Co-ordinate system: British National Grid EPSG: 27700

VATTENFALL

Royal HaskoningDHV
Enhancing Society Together



Legend:

- Norfolk Boreas red line boundary

Norfolk Boreas Onshore Project Infrastructure (Scenario 1)

- Onshore cable route
- Construction access
- Operational access

Highway links

- Core highway links
- Minor highway links

Link Category

- Category 1 links: Kings Lynn Port: 70% HGV flows
- Category 1 links: Lowestoft/Great Yarmouth Port: 70% HGV flows
- Category 2 links: 100% HGV flows

Project: Norfolk Boreas	Report: Environmental Statement
----------------------------	------------------------------------

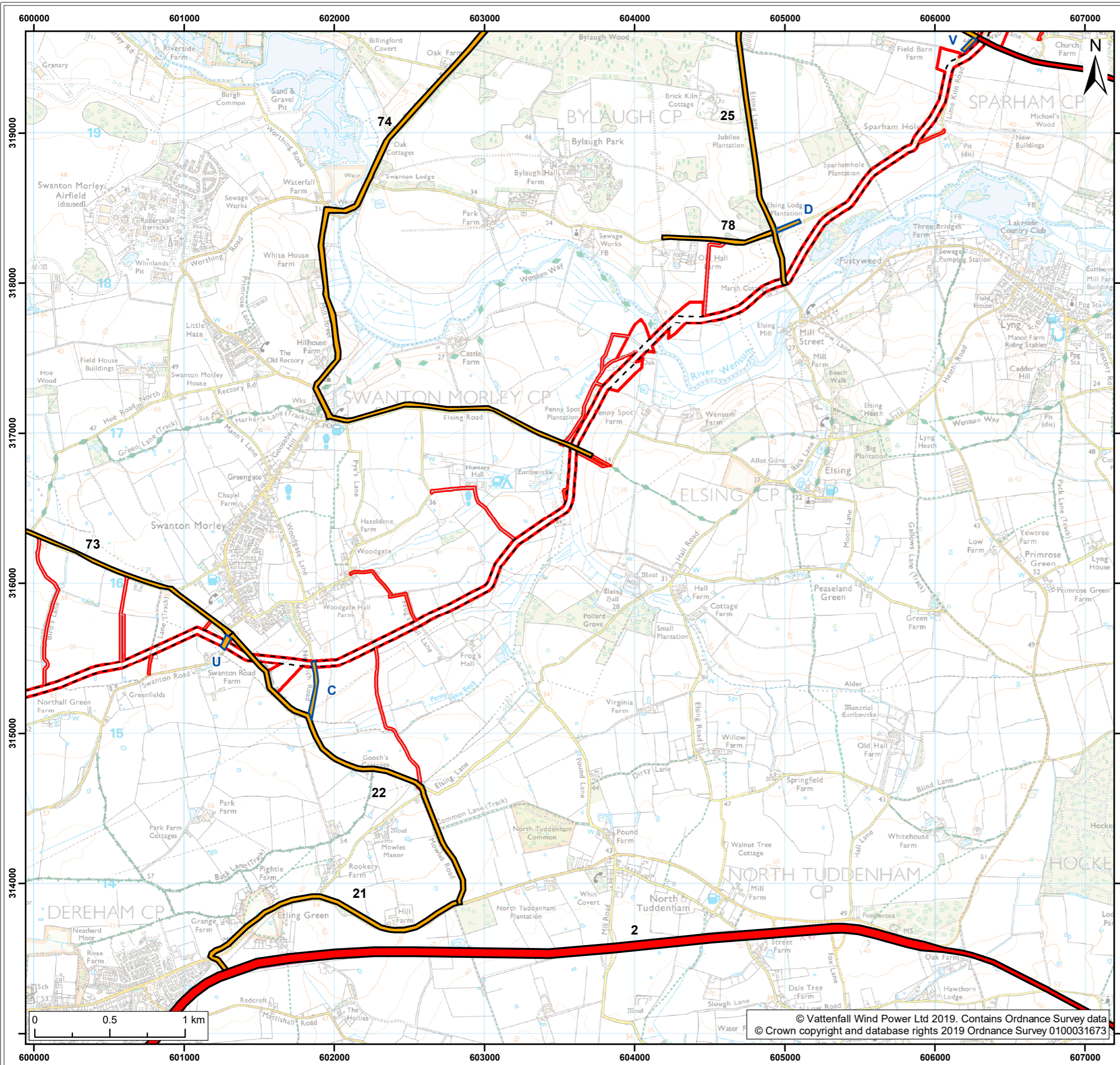
Title:
Scenario 1 - HGV Construction Traffic Flows:
Minor Highway Links Access Strategy (1:25,000)
(Map 6 of 9)

Figure: 24.11a	Drawing No: PB5640-006-024-011a				
Revision:	Date:	Drawn:	Checked:	Size:	Scale:
01	18/02/2019	JT	CD	A3	1:25,000

Co-ordinate system: British National Grid EPSG: 27700

VATTENFALL

Royal HaskoningDHV
Enhancing Society Together



Legend:

- Norfolk Boreas red line boundary
- Norfolk Boreas Onshore Project Infrastructure (Scenario 1)**
- Onshore cable route
- Construction access
- Operational access
- Highway links**
- Core highway links
- Minor highway links
- Link Category**
- Category 1 links: Lowestoft/Great Yarmouth Port: 70% HGV flows
- Category 2 links: 100% HGV flows

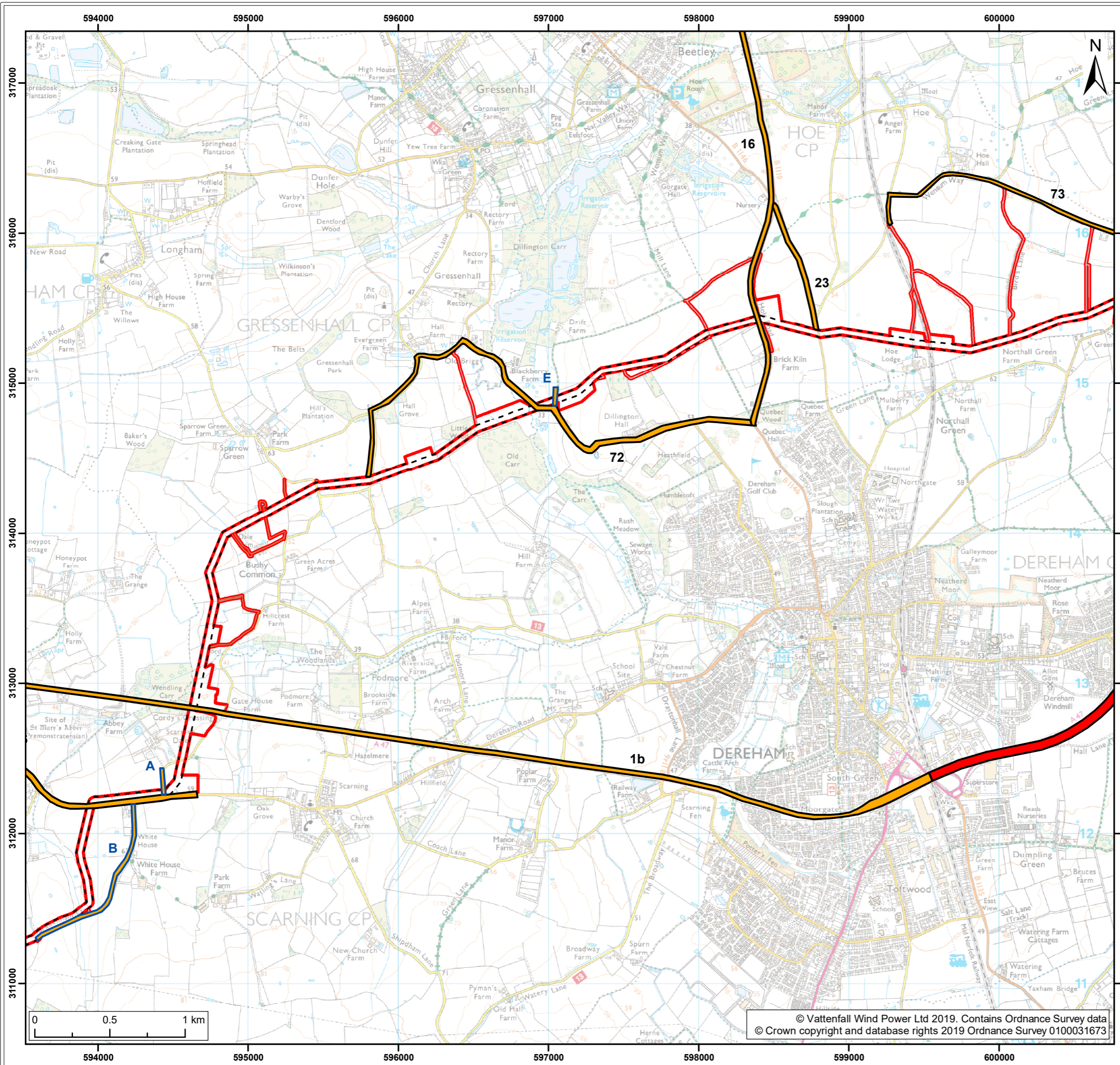
Project: Norfolk Boreas	Report: Environmental Statement
-----------------------------------	---

Title:
**Scenario 1 - HGV Construction Traffic Flows:
Minor Highway Links Access Strategy (1:25,000)
(Map 7 of 9)**

Figure: 24.11a		Drawing No: PB5640-006-024-011a			
Revision:	Date:	Drawn:	Checked:	Size:	Scale:
01	18/02/2019	JT	CD	A3	1:25,000

Co-ordinate system: British National Grid EPSG: 27700

Enhancing Society Together



Legend:

- Norfolk Boreas red line boundary
- Norfolk Boreas Onshore Project Infrastructure (Scenario 1)**
- Onshore cable route
- Construction access
- Operational access
- Highway links**
- Core highway links
- Minor highway links
- Link Category**
- Category 1 links: Lowestoft/Great Yarmouth Port: 70% HGV flows
- Category 2 links: 100% HGV flows

Project: Norfolk Boreas	Report: Environmental Statement
----------------------------	------------------------------------

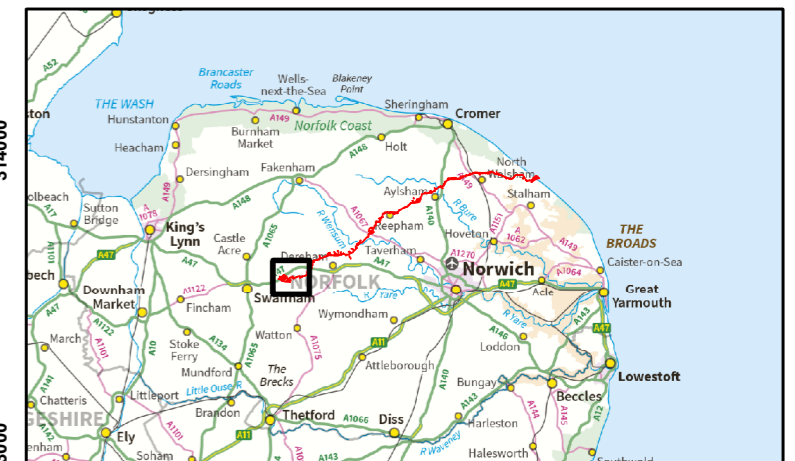
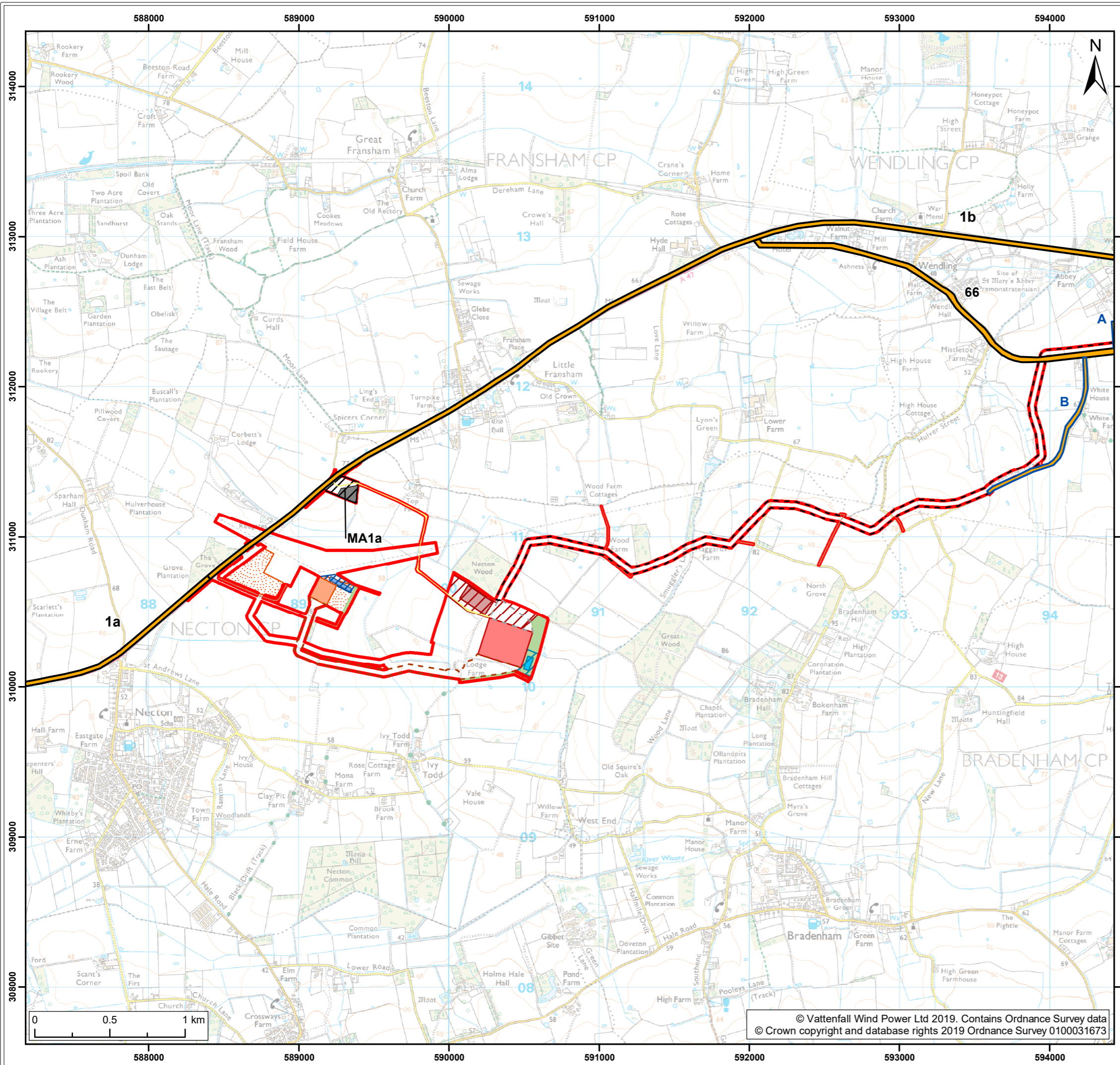
Title:
Scenario 1 - HGV Construction Traffic Flows:
Minor Highway Links Access Strategy (1:25,000)
(Map 8 of 9)

Figure: 24.11a		Drawing No: PB5640-006-024-011a			
Revision:	Date:	Drawn:	Checked:	Size:	Scale:
01	18/02/2019	JT	CD	A3	1:25,000

Co-ordinate system: British National Grid EPSG: 27700

VATTENFALL

Royal HaskoningDHV
Enhancing Society Together



Legend:

- Norfolk Boreas red line boundary
- Onshore cable route
- Cable route entry to substation
- Onshore 400kV cable route
- Mobilisation zone
- Indicative mobilisation area compound
- Construction access
- Operational access
- Permanent access
- Onshore project substation
- Onshore project substation temporary construction compound zone
- Indicative onshore project substation temporary construction compound
- Attenuation pond zone
- Indicative attenuation pond
- Indicative mitigation planting
- National Grid substation extension
- National Grid temporary works
- National Grid attenuation pond location search area
- Indicative National Grid attenuation pond

Highway links

- Core highway links
- Minor highway links

Link Category

- Category 2 links: 100% HGV flows

Project:	Report:
Norfolk Boreas	Environmental Statement

Title: Scenario 1 - HGV Construction Traffic Flows: Minor Highway Links Access Strategy (1:25,000) (Map 9 of 9)

Figure: 24.11a		Drawing No: PB5640-006-024-011a			
Revision:	Date:	Drawn:	Checked:	Size:	Scale:
01	18/02/2019	JT	CD	A3	1:25,000

Co-ordinate system: British National Grid EPSG: 27700

VATTENFALL

Royal HaskoningDHV
Enhancing Society Together